

Evolver ELEVATE

Enterprise Legal eDiscovery, Validation & AI Technology Enablement

AI speed with defensible outcomes.

Customer Litigation & Investigation Challenge—Use Case

Large law firms and Fortune 500 company legal teams face accelerating “information overload” across email, chat, collaboration platforms, cloud repositories, and modern multimedia (images, audio, video).

They must scope matters proportionally, preserve chain-of-custody, and meet aggressive litigation/investigation timelines while controlling review costs and reducing risk (privilege waiver, inadvertent Personal Identifiable Information (PII) exposure, and inconsistent coding decisions). Using traditional keyword searching alone is resource-intensive, requires training/iteration, and often struggles with low-text or non-text content, exactly where critical evidence can reside.

Solution Overview

ELEVATE is Evolver’s commercial eDiscovery integrated solution that deliberately combines Evolver’s eDiscovery professional services with the eDiscovery AI software platform (native Relativity plugin + secure API). Evolver provides matter governance, defensible workflow design, prompt engineering, and sampling/validation.

The platform delivers AI-powered: early case intelligence, review prioritization and organization (relevance + privilege + privilege logs), privacy, multimedia (image compare/filter/facial recognition), deposition prep and Casebot (conversational, document-backed Q&A).



90%+ recall with 50–85% precision for relevant-document identification



Removes 50–90% of irrelevant materials early



Scales to millions of documents in hours/days, compressing weeks of analysis into days.



The platform is SOC 2 Type II certified, runs on enterprise-grade Microsoft Azure, encrypts data in transit and at rest, and enforces no data retention (automatic deletion after processing).

Evolver Integrated Solution – Unique Features

- Prompt-driven GenAI review with transparent, explainable outputs and rapid adjustments—no TAR training or iterative model refinement required.
- Multi-modal coverage: applies text-review instructions to images; enables image compare/filter and facial recognition for investigations, IP disputes, and workplace matters.
- Defensibility by design: insights and CaseBot answers are tied to underlying documents; Evolver adds sampling/validation plans and audit-ready process memos.
- Privacy at scale: automated PII identification/extraction and machine redaction with QC gates to reduce exposure risk and rework.
- Enterprise-grade security: SOC 2 Type II, Microsoft Azure hosting, encryption in transit/at rest, tenant isolation, and automatic deletion after processing.

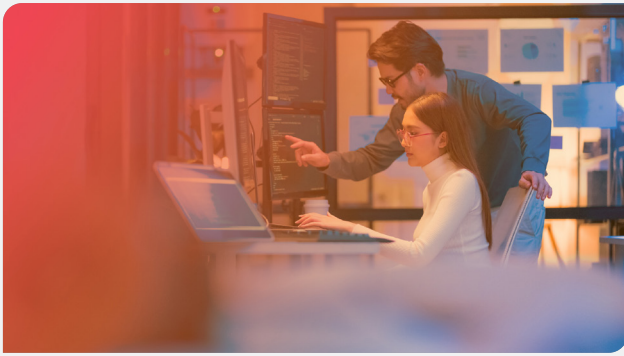
Expected Customer Benefits

Total review is reduced by eliminating low-value content early and accelerating relevance and privilege workflows, while improving consistency and defensibility through governed prompts and sampling-based validation.

Clients gain faster time-to-case strategy along with stronger support for depositions and motion practice through timelines, identification of key people and events, and evidence-backed summaries.

Risk is lowered across matters by reducing privilege and PII errors and enabling teams to scale without linear increases in reviewer headcount.

Law firms benefit from higher throughput while delivering differentiated client value and improving competitiveness in a market increasingly defined by speed and precision.

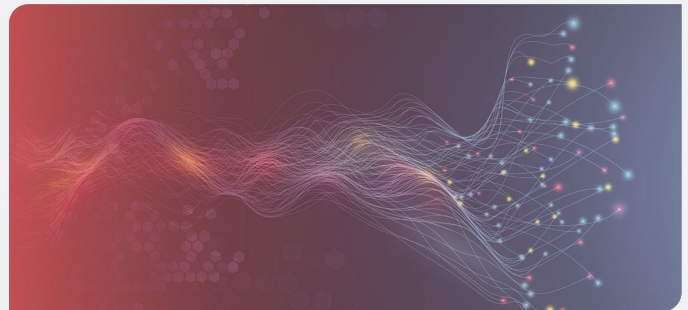


Risks/Dependencies, Procurement & Next Steps

- Outcome quality depends on clear issue definitions, disciplined prompt governance, and agreed validation thresholds; Evolver mitigates this through a matter charter, prompt libraries, pilot testing, and statistically sound sampling.
- Relativity access/permissions, data-quality, and timely client decisions on privilege/PII policy are key dependencies.
- Procurement is structured through Evolver and includes commercial licensing for the eDiscovery AI platform, plus Evolver professional services for project management, governance, quality control/validation, and production management.
- Recommended next step: a short pilot on a representative matter (or received production) to establish baseline metrics, run Review + Privacy/Multimedia workflows, and deliver a scale plan with measured throughput, quality (recall/precision), and cost-per-document improvements.

How It Works

- Evolver initiates each engagement with a defensibility-first matter charter (scope, issues, privilege rules, PII policy, workflows, and acceptance criteria), then configures secure data ingestion and Relativity integration.
- Early Case Intelligence rapidly categorizes documents (Key/Likely Relevant/Potentially Relevant/Not Relevant) and produces key documents, key events (timeline), and key people to support strategy and deposition planning; initial narrative intelligence is typically available within ~72 hours in standard workflows.
- Evolver then operationalizes AI Review by translating attorney review instructions into controlled prompts, testing them on small sets, and validating with statistically sound sampling to produce recall/precision metrics.
- For sensitive data, Evolver activates privacy workflows (PII detection and machine redaction).
- For image-heavy matters, the Multimedia suite applies the same instructions used for text to images and can perform similarity analysis and facial recognition.
- Throughout the matter, CaseBot enables attorneys and investigators to ask unlimited natural-language questions and receive immediate, document-backed answers with an auditable trail.
- Evolver delivers production packages, privilege logs, quality memos, and executive reporting tied to throughput, quality, and cost controls.



Why Evolver

Our Team delivers industry-leading eDiscovery and legal technology services to law firms, corporations, and government clients, simplifying complex data challenges, accelerating review, and ensuring accuracy at every step. We empower legal teams with secure, scalable solutions that integrate seamlessly into existing workflows, from rapid forensic collection to fully managed review.

Evolver delivers:

- eDiscovery Services
- Managed Services
- Incident Response Solutions



Jamie Berry | Vice President & General Manager, Legal Services

Jamie.Berry@evolverinc.com - 443.745.4514 - www.evolverinc.com